

The image shows a hallway in a renovated apartment. On the right is a large, dark wood door with a brass kick plate. The floor is dark marble with a mosaic pattern. The ceiling has white decorative beams. In the background, a courtyard with a building facade is visible.

MILANO BOCCONI – LE
ATMOSFERE DI UN
PALAZZO D'EPOCA IN UN
APPARTAMENTO
RISTRUTTURATO A
NUOVO

VIA PIETRO TEULIE, 11, MILANO

MILANO BOCCONI – LE ATMOSFERE DI UN
PALAZZO D'EPOCA IN UN APPARTAMENTO
RISTRUTTURATO A NUOVO

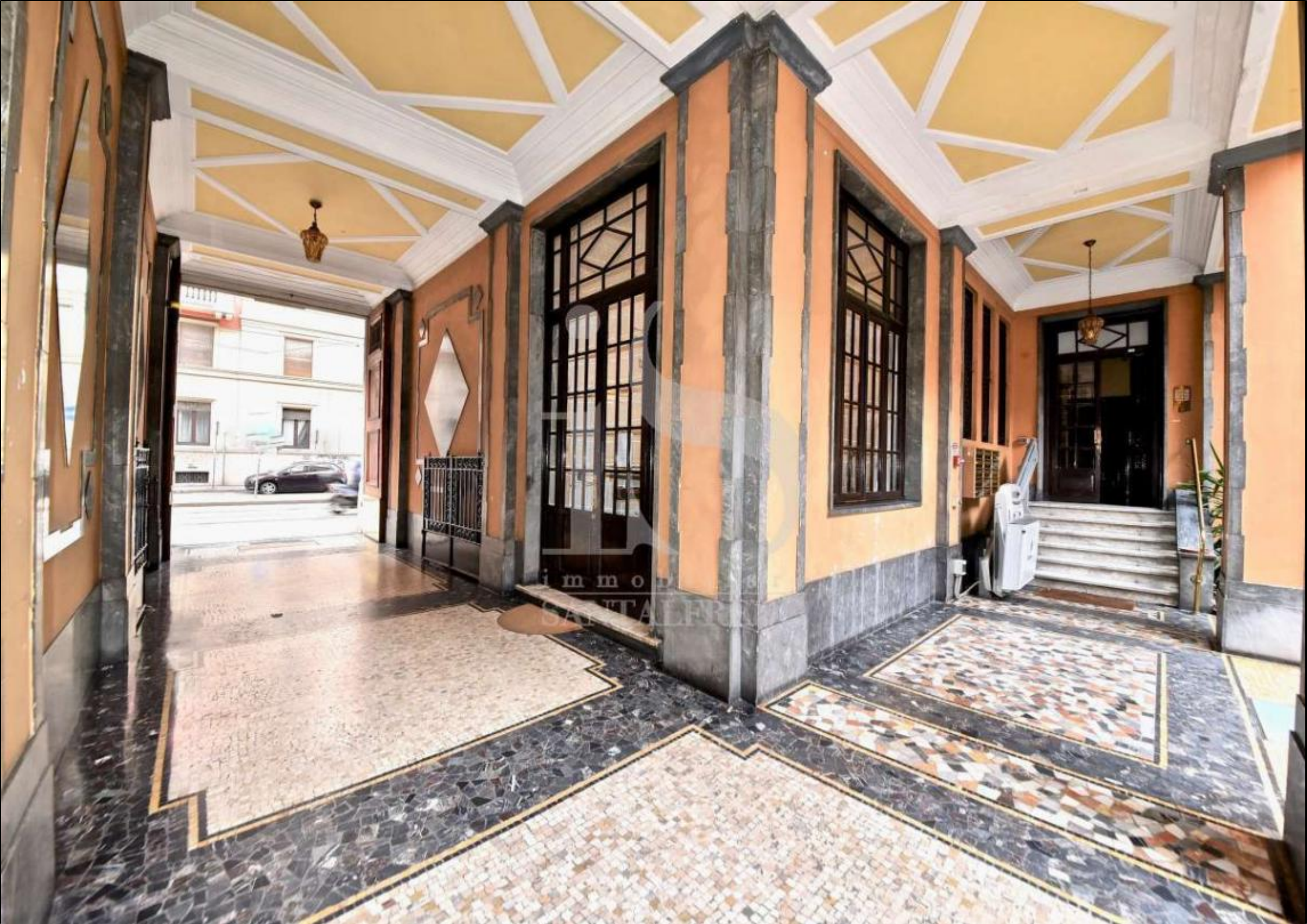
547.000 €

*MILAN BOCCONI - THE ATMOSPHERE OF A VINTAGE PALACE IN A NEWLY
RENOVATED APARTMENT. A house located in an elegant and dynamic neighborhood,
where historical buildings from the 19th century mix with more modern buildings; a short
distance away one of the most popular universities in Europe, Bocconi ...*

80 mq | 3 locali

 *i m m o b i l i a r e*
SANTALFREDO

Telefono: 039 690 81 37 - Email: info@immobiliariesantalfredo.it



MILANO BOCCONI – LE ATMOSFERE DI UN PALAZZO D'EPOCA IN UN APPARTAMENTO RISTRUTTURATO A NUOVO

... university. We are inside a period building built at the beginning of the 1900s, here you will find an elegant mix of high ceilings and precious materials that characterize the ...

Le necessità, i sogni legati alla casa cambiano e per ognuno sono diversi. La vera abilità è quella di trovare la soluzione per soddisfare ognuno di queste persone.

... common parts and contribute to making the prestige of the building. Here is our proposal, an elegant, modern and well-organized three-room apartment thanks to a recently completed ...

is immobiliare
SANTALFREDO

Telefono: 039 690 81 37 - Email: info@immobiliariesantalfredo.it



DESCRIZIONE

... renovation. The distribution layout has been designed with the functionality of each room in mind and includes an entrance hall, corner kitchen complete with custom-made furnishings with appliances, lounge, first bedroom with ensuite bathroom complete with furniture, bathroom fixtures and large crystal shower. dimensions, second bedroom, second bathroom also furnished. The rooms are enhanced by the height of the ceilings equal to 3.50. An excellent ...

Immobiliare Santalfredo può consigliarti i passi migliori per concretizzare l'acquisto o la vendita di un immobile, guidandoti nel tuo investimento immobiliare in modo attento ed produttivo.

... parquet was laid on the floors. The lighting system is designed and adjustable in intensity based on the external light. WHY BUY THIS HOME A- If you like the atmosphere of period buildings, with marble, the decorations of the common areas and high ceilings, but you don't want to give up an apartment with a cut functional. B- If you like the idea of a comfortable apartment with accessory spaces available such as two bathrooms, one of which is in the ...



Telefono: 039 690 81 37 - Email: info@immobiliariesantalfredo.it



immobiliare
SANTAFERUDO

DETTAGLI AGGIUNTIVI

80 mq | 3 locali

- Stato al rogito | available
- Piano | piano rialzato
- Totale piani edificio | 5
- Numero locali | 3
- Camere da letto | 2
- Cucina | Kitchenette
- Balconi | 0
- Mansarda | No
- Taverna | No
- Cantina | Sì
- Piscina | No
- Tipo garage | Nessuno
- Pavimenti soggiorno | Parquet
- Pavimenti cucina | Parquet
- Pavimenti taverna | Parquet
- Fonte riscaldamento | Centralized
- Tipo riscaldamento | Termosifone
- Allarme | No
- Portineria | Sì
- Ascensore | Sì
- Classe energetica | F
- Indice di prestazione energetica | 264.20
- Giardino | Common

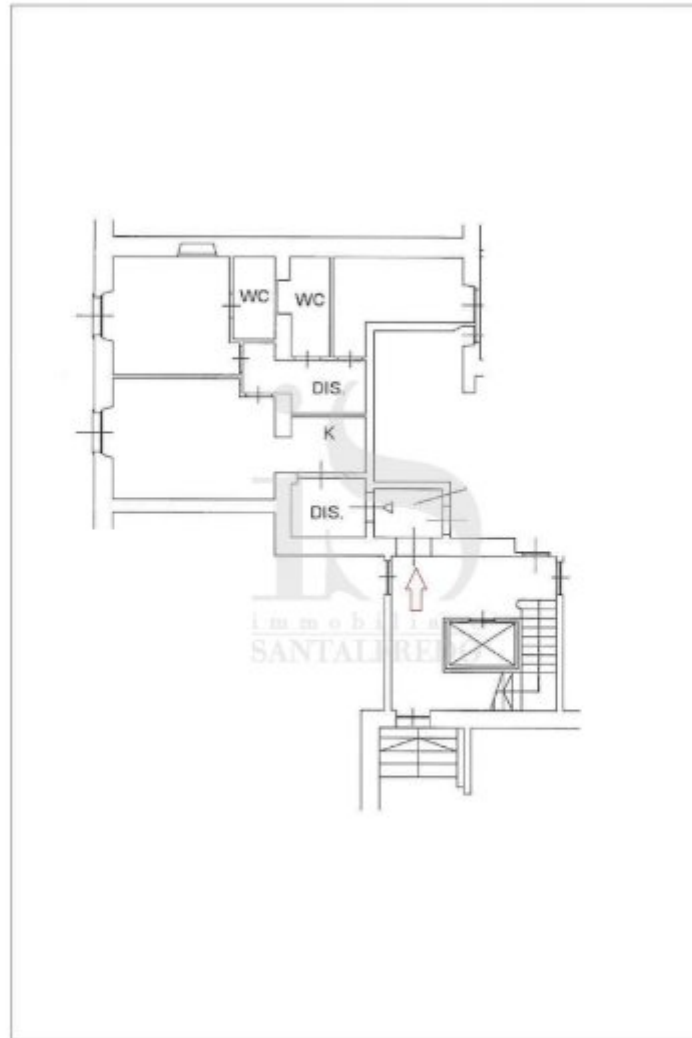


Telefono: 039 690 81 37 - Email: info@immobiliariesantalfredo.it

GALLERIA IMMAGINI



PLANIMETRIA





Immobiliare Santalfredo
Via Remo Brambilla, 7
20863 Concorezzo (MB)

Telefono: 039 690 81 37

Email: info@immobiliariesantalfredo.it

Sito Web: <https://www.immobiliariesantalfredo.it>